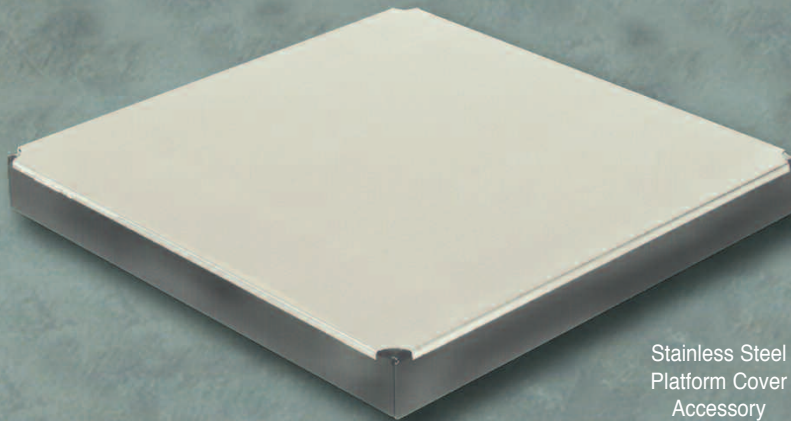


ADVANCED WEIGHING SYSTEMS FOR NON-WASHDOWN APPLICATIONS!

DELTA SERIES

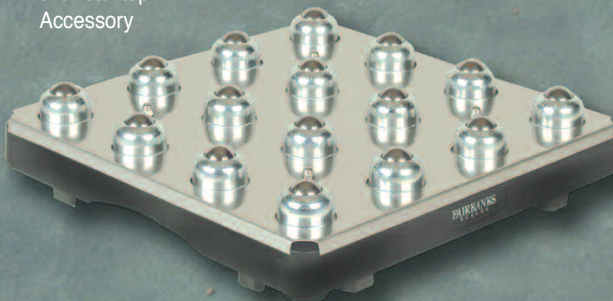
GENERAL PURPOSE BENCH SCALES

• GENERAL WEIGHING • SHIPPING & RECEIVING • BATCHING • QUALITY CONTROL • INVENTORY



Stainless Steel
Platform Cover
Accessory

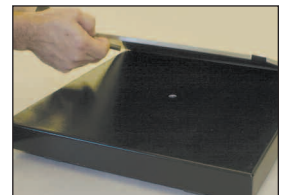
Roller-ball top
Accessory



DEPENDABLE
ACCURATE
DURABLE



VERSATILE
ECONOMICAL



FAIRBANKS®

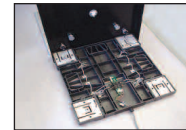
DELTA SERIES GENERAL PURPOSE BENCH SCALES

FEATURES

- Platform capacities 6 lb to 500 lb
- NTEP & MC approved platform
- Factory Mutual approved load cells
- Lower profile than competing bench scale models
- Compatible with Fairbanks Scales extensive line of analog instruments and counting scales



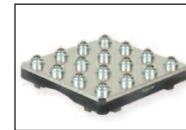
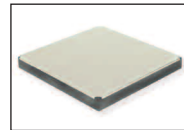
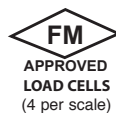
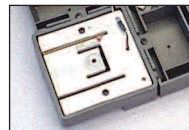
- Optional platform covers simply lift off for easy scale access or cleaning



- 18" x 18" scales feature a composite base and steel platform (painted black)



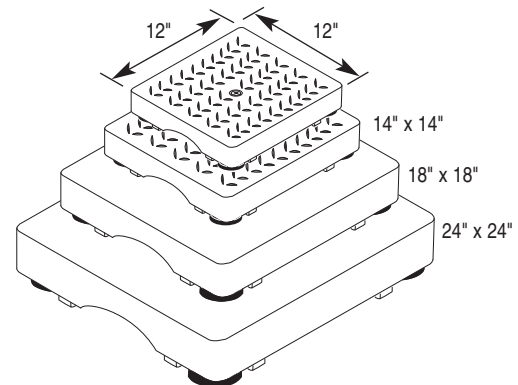
- 24" x 24" models feature an all steel design for heavy-duty industrial weighing



- Stainless steel cover available for all models; Roller-ball top available for 14", 18" and 24" models

SPECIFICATIONS

- Cable Length 10 foot (platform to instrument)
- Overload 300% of rated scale capacity
- Excitation voltage (VDC) . . . 10
- Rated output (mV/V) 1
- Output resistance Ω 1,000
- Material:
- Base Composite - 12" x 12", 14" x 14" and 18" x 18"
 - Mild steel - 24" x 24"
 - Top Composite - 12" x 12" and 14" x 14"
 - Mild steel - 18" x 18" and 24" x 24"
- Finish Painted black powder coat
- Resolution 3,400 divisions maximum commercial
- Accessories Stainless steel platform cover (all models)
- Roller-ball top (14" x 14", 18" x 18", 24" x 24")
- Approvals NTEP CC# 99-197, MC# AM-5356, FM approved load cells



DIMENSIONS AND CAPACITIES

Platform Size	Platform Height	Platform Capacity
12" x 12"	2.28"	6, 12 or 25 lbs.
14" x 14"	2.38"	60 or 150 lbs.
18" x 18"	2.64"	100 or 300 lbs.
24" x 24"	2.39", 2.42" & 2.48"*	200, 300 & 500 lbs.

*Height dimension corresponds to respective capacity.